



Reli-a-Flex™

ELECTRICALLY INSULATED

**Precision Mechanical Coupling
For Transducer Protection**

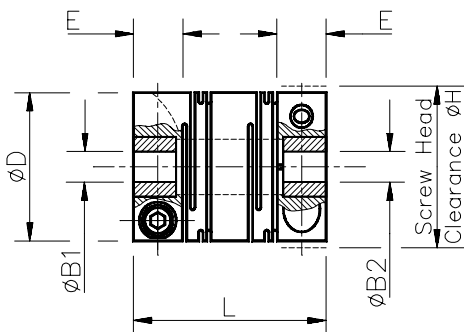
- ▣ Provides electrical insulation
- ▣ General Tolerances $\pm 0.13\text{mm}$
- ▣ Material: Coupling - Aluminium alloy Grade 7075-T6
Insert - Glass fibre reinforced epoxy
- ▣ Finish: Alocrom 1000
- ▣ Couplings are chambered as standard and fitted with metric stainless steel screws
- ▣ Imperial bores and metric-imperial bore combinations also available (see table below)

Patented - UK No. 2316735
Pending - Int'l No. PCT/GB97/02233

Maximum Misalignments			
	Parallel mm	Angular deg	Axial mm
RCL20Ci	0.12	3.0	+/-0.50
RCL25Ci	0.16	3.0	+/-0.70

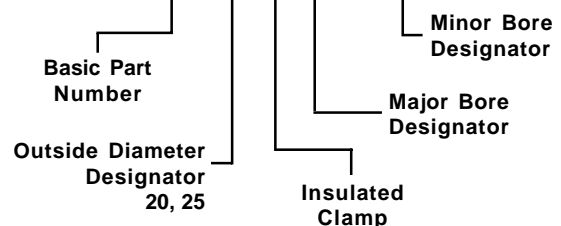
Available Bore Combinations		Torque Capacity			Basic Part Number	Dimensions			Technical Information			
		Non Reversing Nm	Peak Nm	Reversing Nm		O/D \varnothing mm	Length L mm	Hub E mm	Torsional Stiffness Nm/rad	Moment of Inertia kgm^2	Mass gm	Max Speed rpm
4	0.1875	1.50	1.85	1.05	RCL20Ci	20.00	26.00	6.60	109	9.00E-07	15	7500
5		1.55	2.30	1.05								
6	0.250	1.45	2.45	0.95								
8		1.30	2.15	0.85								
10	0.375	2.10	3.50	1.40	RCL25Ci	25.00	31.00	7.60	187	3.00E-06	33	5000

Bore tolerance $+0.060/-0.000\text{mm}$



How to Order

RCL 20 Ci -4 -0.1875



Couplings Direct :

<http://www.tpa-us.com>



(803)396-5544



(803)396-7810

Email: sales@tpa-us.com



Reli-a-Flex™ INSULATED

Coupling Engineering Application - Proposal Form

Please Fax back this form to:

(803)396-7810

Contact: _____ Tel: _____ Ext: _____

Position: _____ Direct (if available): _____

Company: _____ Fax: _____

Address: _____

_____ Postcode: _____

E-mail: _____ Website: _____

Required Operating Parameters

Outside Diameter: _____ Length: _____

Bore 1 Diameter: _____ Coupling material: _____

Bore 2 Diameter: _____ Insert material: _____

Torque

Non-Reversing: _____ Reversing: _____ Peak: _____

Mis-alignments

Parallel: _____ Angular: _____ Axial: _____

Speed RPM: _____ Temperature: _____

Environmental Conditions/Consideration

Duty Cycle: _____ Required Service Life: _____

Torsional Stiffness: _____

Moment of Inertia: _____ Mass: _____

Reliance Gear Company Limited have been specialists in motion control for over forty years. The company also designs, manufactures and tests intricate mechanisms and assemblies for the scientific instrument, aerospace and defence industries. The engineering expertise throughout the company forms the basis for their standard product range, currently available on the website; www.tpa-us.com